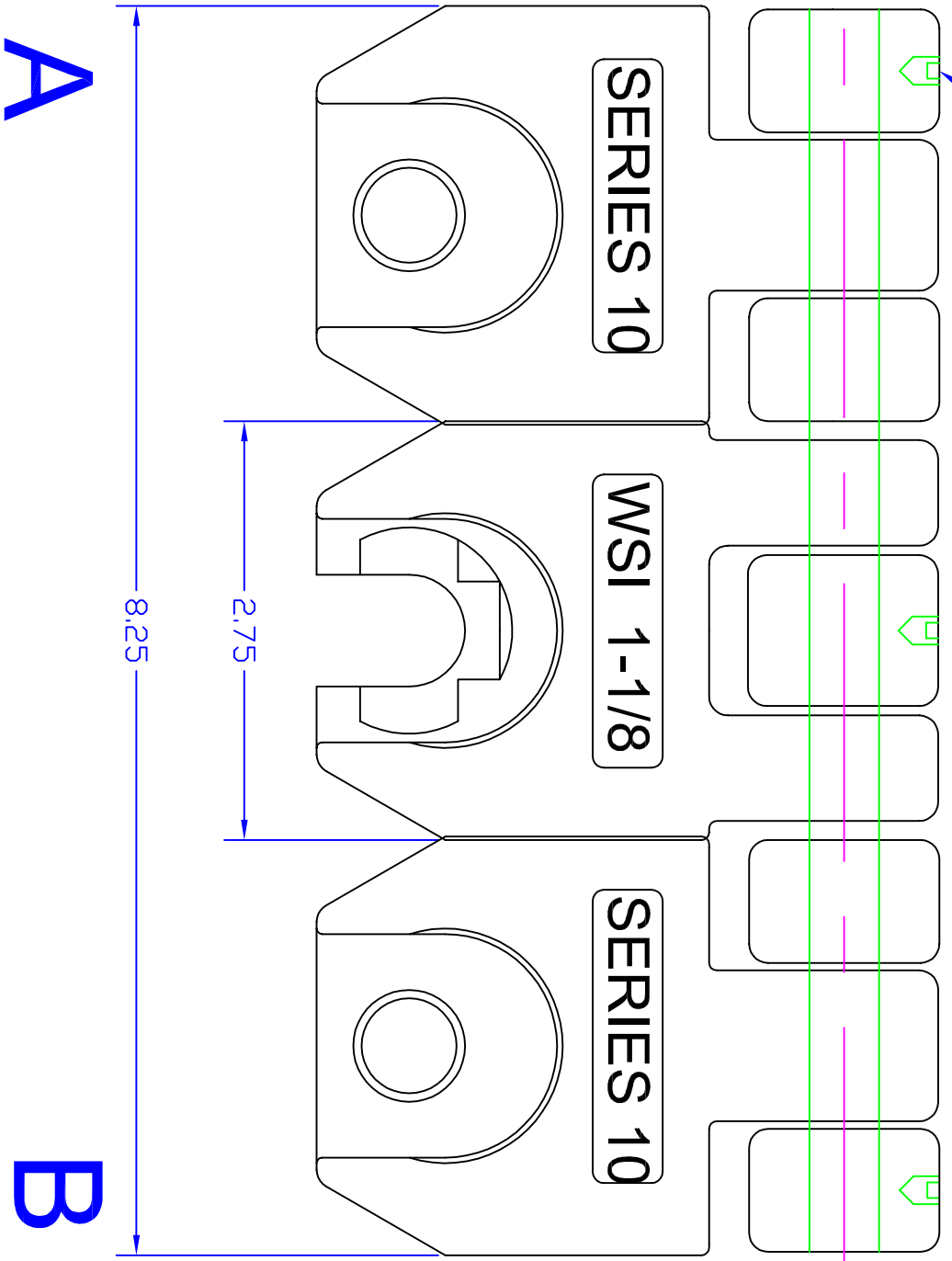


1/4-20 UNC Cone
Point Set Screw
Permenent Thread Lock
Applied. (3) Places



- Notes:
1. DEBURR AND REMOVE ALL SHARP EDGES
.015 X 45° UNLESS OTHERWISE NOTED
 2. PART TO BE FREE OF MACHINE OILS AND METAL CHIPS
 3. SURFACE "A" MUST BE PARALLEL TO SURFACE "B" WITHIN .015.
 4. BORE "C" MUST BE PERPENDICULAR TO SURFACES "A" & "B" WITHIN .010, AND TO HINGE PIN WITHIN .020.

TOLERANCES UNLESS NOTED

DECIMAL	X.X	X.XX	X.XXX	ANGULAR SURFACE
	±.1	±.03	±.005	±.5°
				125rms



Material:

Carbon Steel
1040-1045

Wellhead Systems Inc.
710 West McVey
Hill City, Kansas 67642

Series 10T 1-1/8" Polish Rod
Clamp Max. Load 40,000#
All Dimensions ±.005 Unless
Otherwise Stated

P/N 1000-0125-103