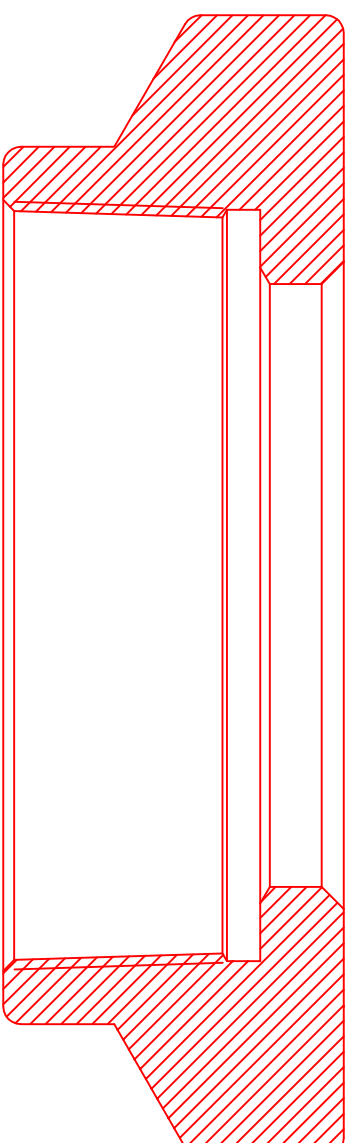
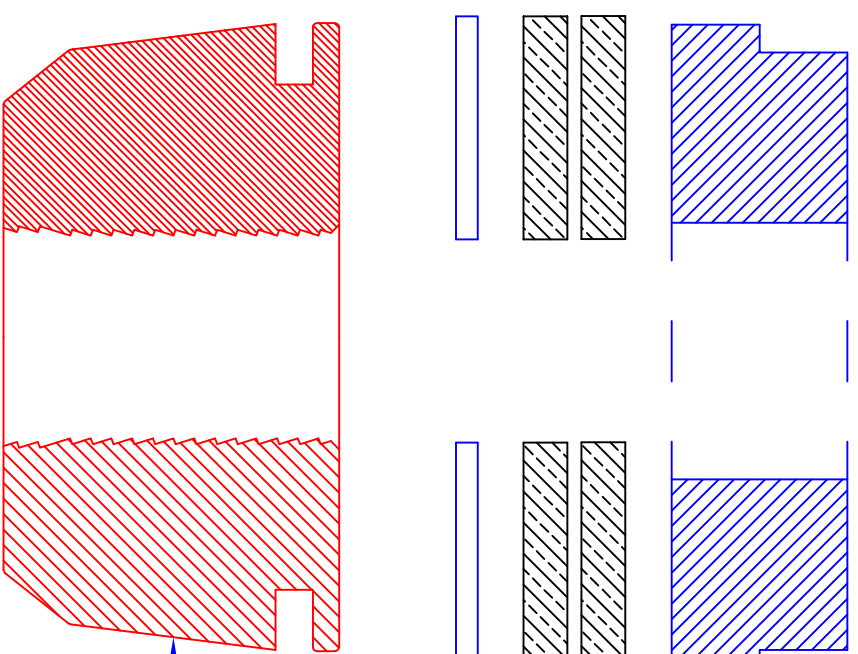


4-1/2 8RD MALE  
 DUCTILE IRON BODY  
 P/N 1344-0000-030



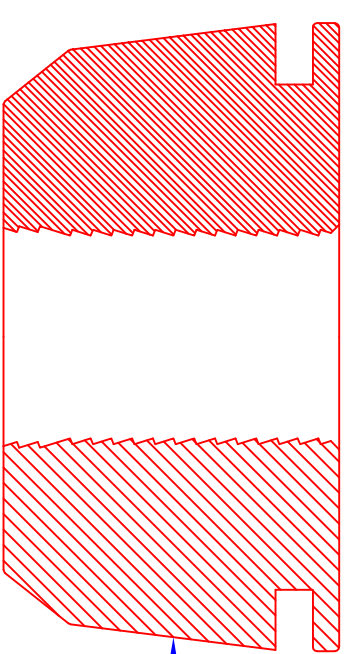
TOP CAP  
 P/N 1310-0000-016



TOP PLATE  
 P/N 1320-0238-004

PACKOFF RUBBER (2)  
 P/N 1320-0238-003

BOTTOM PLATE  
 P/N 1320-0238-002



CASE HARDENED SLIPS  
 P/N 1320-0238-001

- Notes:
1. DEBURR AND REMOVE ALL SHARP EDGES  
 .015 X 45° UNLESS OTHERWISE NOTED
  2. PART TO BE FREE OF MACHINE OILS AND METAL CHIPS
  3. REFERENCE API 5B AND 11-IW

TOLERANCES UNLESS NOTED

DECIMAL	X.X	X.XX	X.XXX	ANGULAR SURFACE
	±.1	±.015	±.005	±.5° 125 rms



Wellhead Systems Inc.  
 710 West McVey  
 Hill City, Kansas 67642

Material:  
 Ductile Iron  
 (Per API 11-IW)

4-1/2 8rd X 2-3 Type "A-7"  
 Male Tubing Head  
 All Dimensions ±.005 Unless  
 Otherwise Stated

P/N 1344-0238-001