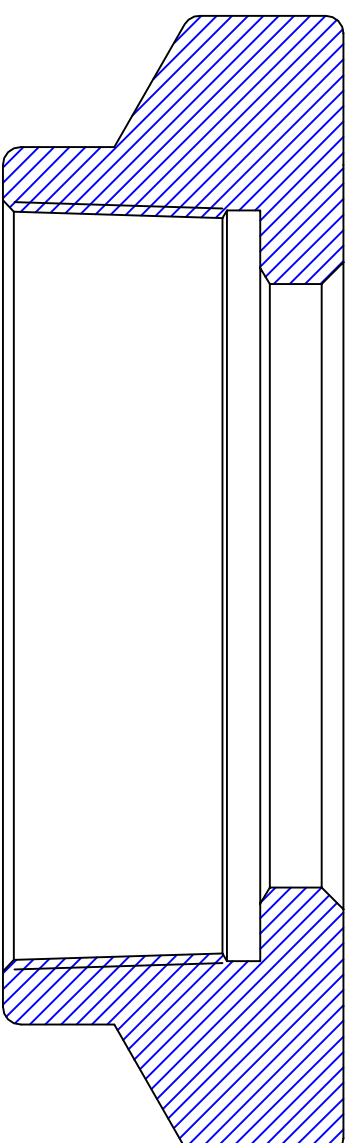


4- $\frac{1}{2}$ 8RD FEMALE
DUCTILE IRON BODY
P/N 1345-0000-030



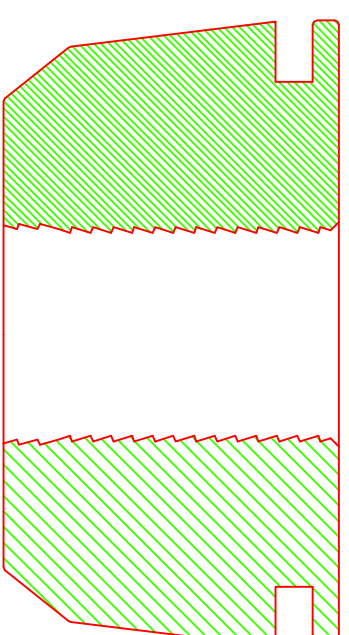
TOP CAP
P/N 1310-0000-016

TOP PLATE
P/N 1320-0238-004

PACKOFF RUBBER (2)
P/N 1320-0238-003

BOTTOM PLATE
P/N 1320-0238-002

CASE HARDENED SLIPS
P/N 1320-0238-001



- Notes:
1. DEBURR AND REMOVE ALL SHARP EDGES
.015 X 45° UNLESS OTHERWISE NOTED
 2. PART TO BE FREE OF MACHINE OILS AND METAL CHIPS
 3. REFERENCE API 5B AND 11-IW

TOLERANCES UNLESS NOTED

DECIMAL	X.X	X.XX	X.XXX	ANGULAR SURFACE
	±.1	±.015	±.005	±.5°
				125 rms



Wellhead Systems Inc.
710 West McVey
Hill City, Kansas 67642

Material:
Ductile Iron
(Per API 11-IW)

4- $\frac{1}{2}$ 8rd X 2- $\frac{3}{8}$ Type "A-7"
Female Tubing Head
All Dimensions ±.005 Unless
Otherwise Stated

P/N 1345-0238-001